



SHAPING BRITAIN'S LANDSCAPES



We have played a significant role in shaping Britain's highways, infrastructure and housing for over 30 years.





About Us

Sword Contracts is a privately owned multi-disciplinary contractor providing civil engineering, rail, construction and building services.

Leadership

We firmly believe in a hands-on approach to the management of all projects.

Frazer Sword

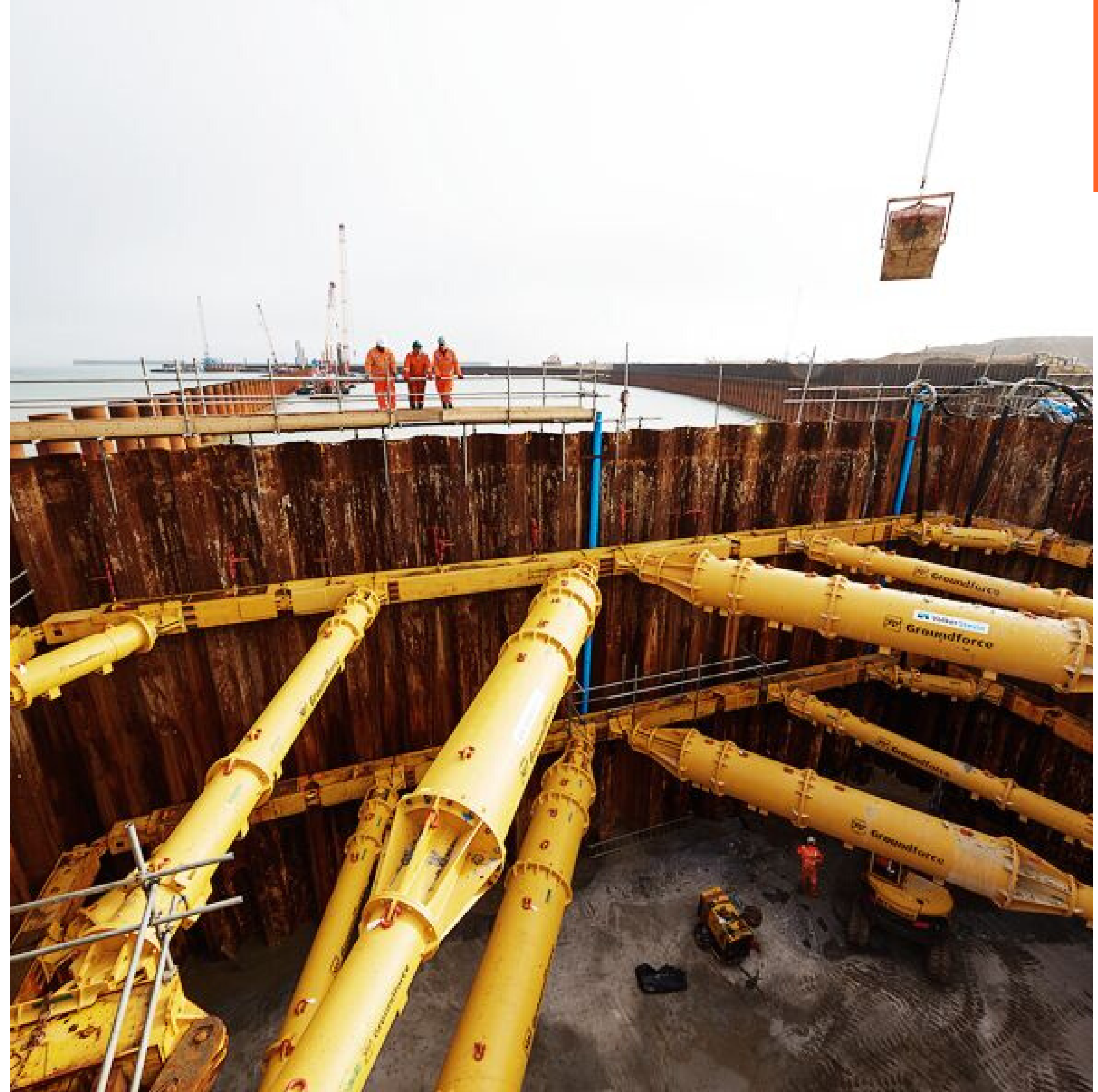
Managing Director

Jimmy Goodwin-Sword

Contracts Manager

Chantelle Goodwin-Sword

HSEQ Manager and Training Director



Our Services



We are a Formwork Reinforcing Concrete subcontractor, specialising in reinforced concrete structures such as bridges, viaducts, tunnels, shafts, flood defence and much more.





OUR VISION

Building your visions and committed to superior quality.

Whatever it takes, Sword Contracts Ltd are devoted to turning your vision into reality and creating extraordinary results.

We aim to become the leading FRC contractor in the UK, by delivering projects that consistently exceed standards, provide exceptional service, reliability and superior quality, on time and on budget.



HEALTH AND SAFETY

Sword Contracts Ltd is committed to the zero-harm mission.

We operate an accredited ISO 45001 integrated HSEQ management system, whereby all associated procedures and practices in all aspects of our business scope of activities are planned, managed, and monitored to ensure continual development.

We are committed to providing a workplace which is safe, healthy and promotes well-being. We understand that the health and safety of its employees is everyone's responsibility. An effective health and safety programme requires continuous communication between employees at all levels.

OUR HEALTH AND SAFETY PROMISE

We as a Company have a commitment to H&S and confirm we shall:

- Ensure good H&S practices throughout the business.
- Provide all employees with sufficient equipment, information, training, and supervision necessary to implement our policies and achieve the company's annual Improvements Plan (H&S objectives).
- Allocate appropriate finance and resource to improve H&S throughout the business through compliance monitoring.
- Report all RIDDOR categorised accidents, incidents, Near Misses or dangerous occurrences.
- Protect the health and safety of all visitors to the company, including contractors and temporary employees, as well as any members of the public who might be impacted by our operations.
- Provide every employee with the information, instruction, training and supervision necessary to carry out their tasks safely.
- Provide sufficient resources for the management of Health & safety.
- Set & monitor safety objectives through the company's annual Improvements Plan.
- Aim to continually improve our safety performance through compliance monitoring and feedback.

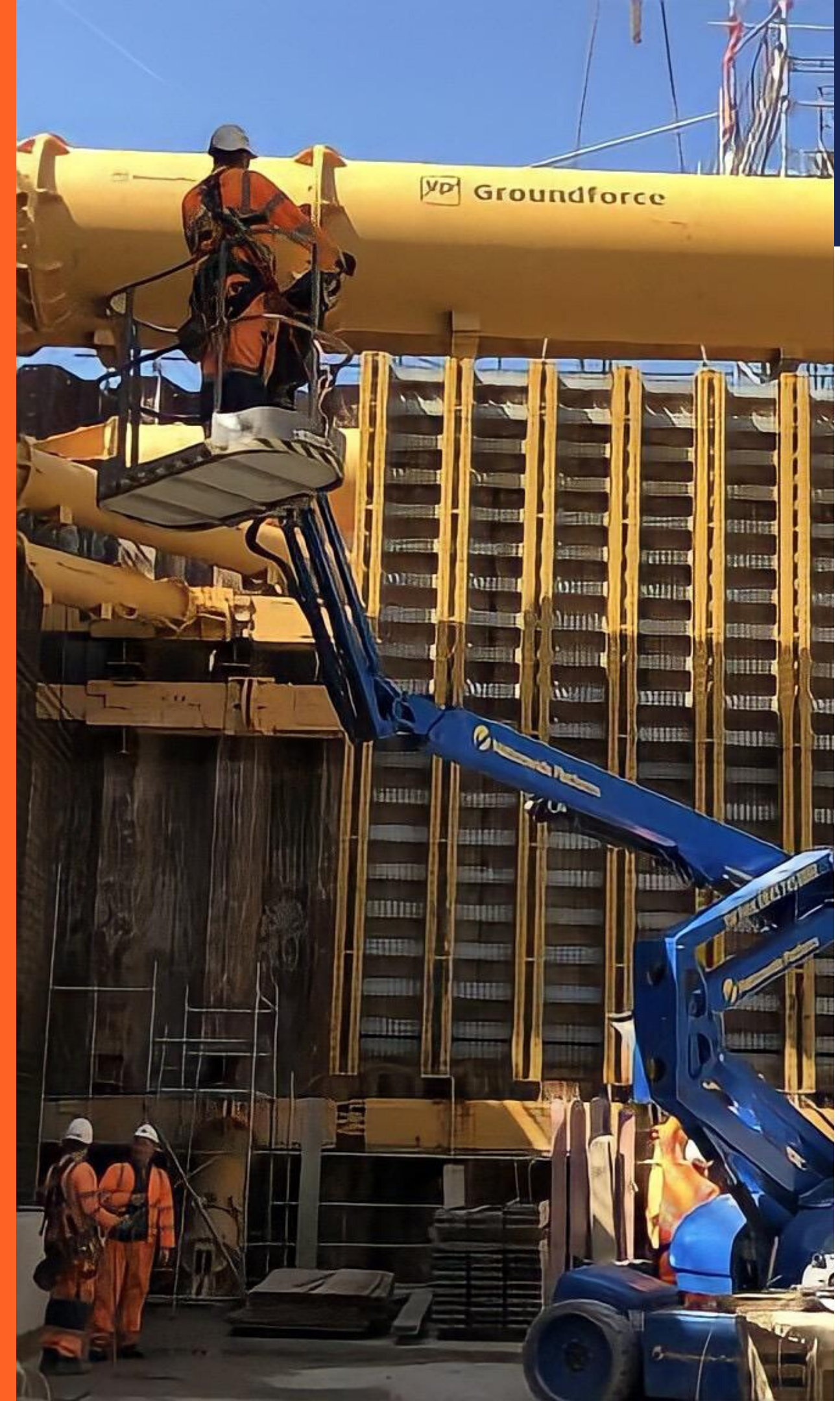


Our Mission

Sword Contracts Ltd strives to be a great place to work, where the Team are inspired to be the best they can be.

Our pro-active approach to training, eliminating health and safety risks and reducing the environmental impact associated with our construction processes, makes us first class.

Sword Contracts Ltd has identified strategic priorities to lead our mission >





RELATIONSHIPS

We build positive, long-term relationships with our Clients and Principal Contractors. Our goal is to put their vision at the heart of our decisions and provide an industry leading construction experience.



CULTURE

We actively build a diverse, inclusive and collaborative work environment where all views are welcomed, openness is encouraged and teamwork is our foundation. We foster a culture of respect, equality, support, wellbeing, safety and inclusivity.





WELL-BEING

Our goal is to help forge strong relationships within the team, be physically active, learn new skills and pay attention to the present moment. We encourage our team to listen to others, 'ask twice' if someone is ok, look out for changes in behaviour in your colleagues and signpost to the GP.



SUPPLY CHAIN

Our goal is to be a responsible link in the supply chain; one that is productive, practical, profitable, sustainable, ethical and reliable.



FUTURE SKILLS

Our goal is to equip our people and the industry with the skills they need both now and for the future, enhancing social mobility and inspiring new talent to join the industry.

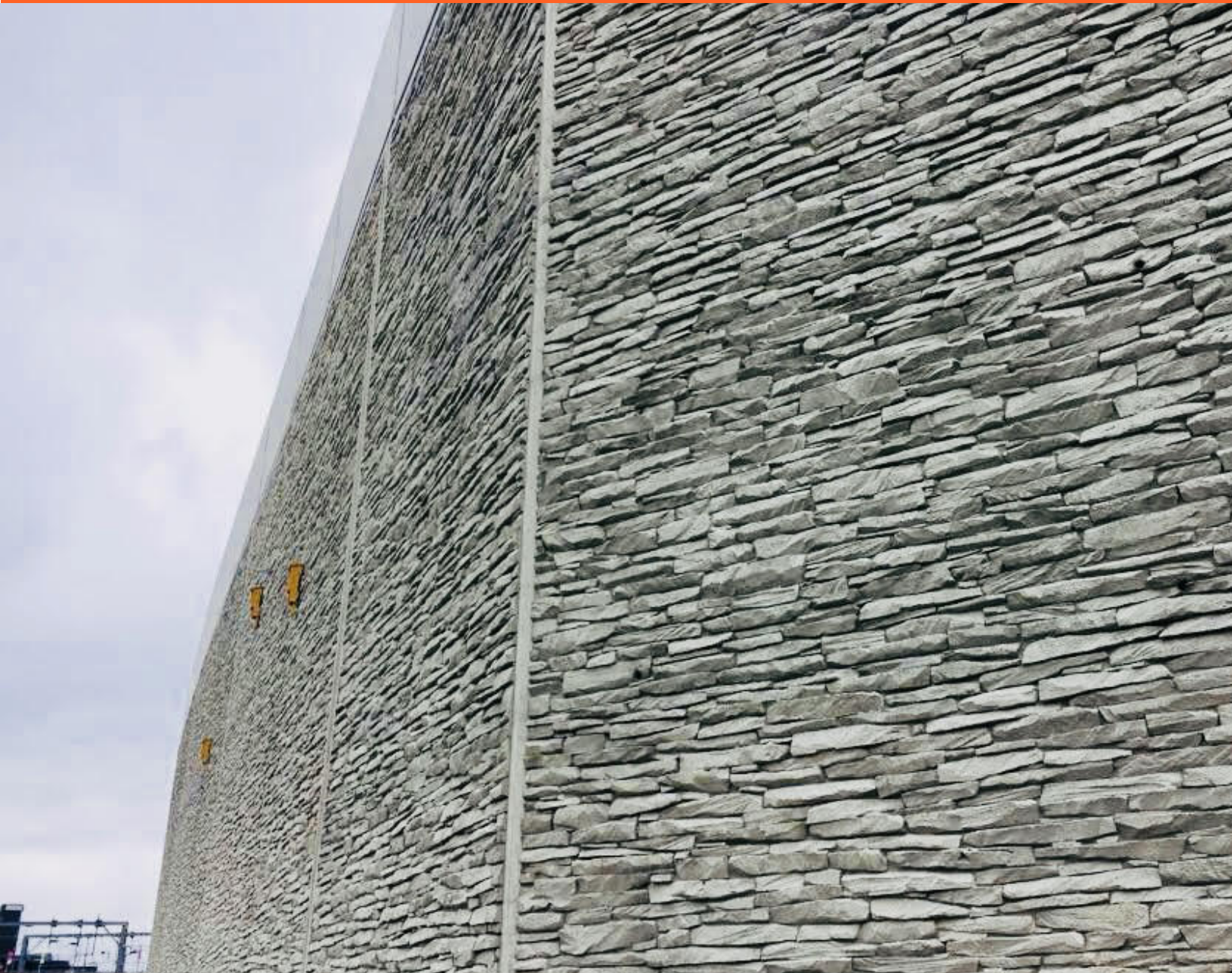


QUALITY

Sword Contracts Limited is accredited to ISO 9001:2015. Our goal is to lead the industry by producing high quality structures across all of our projects.

CLIMATE CHANGE

Our goal is to play an active role in tackling the global climate emergency by reducing our carbon footprint, using sustainable resources, recycling, planting trees and much more.



SOCIAL VALUE

We improve the quality of life in communities where we work by respecting local cultures, engaging local people, and protecting the environment. Our goal is to provide work for local communities and reduce our nuisance impact to neighbours.

OUR SUSTAINABILITY STRATEGY

At Sword Contracts Ltd we are accredited to ISO 14001:2015 certification. We are committed to understanding our impact, and we recognise that the decisions we make now, can have a long-term impact.

Social Sustainability – Recognising, valuing and respecting the needs of everyone impacted by construction. Aiming for zero harm with regards to the health, safety, and environmental aspects.

Economic Sustainability - We want to build a sustainable future by using local resources efficiently, using local labour & materials and ethical procurement methods.

Environmental Sustainability – We want to protect the environment from the impact of emissions, reducing our waste, switching to eco-friendly construction materials where possible, use natural resources with care, recycling and reducing our carbon footprint.



INNOVATION

We are committed to delivering excellence. This means we constantly pursue new and better ways of working by embracing new technologies, construction methods and management tools to help us make bold moves.

We listen, we learn and seek out the best ideas. We confront complacency and continually improve.

Let's explore some of those innovations Sword has utilised >





OUR INNOVATIONS

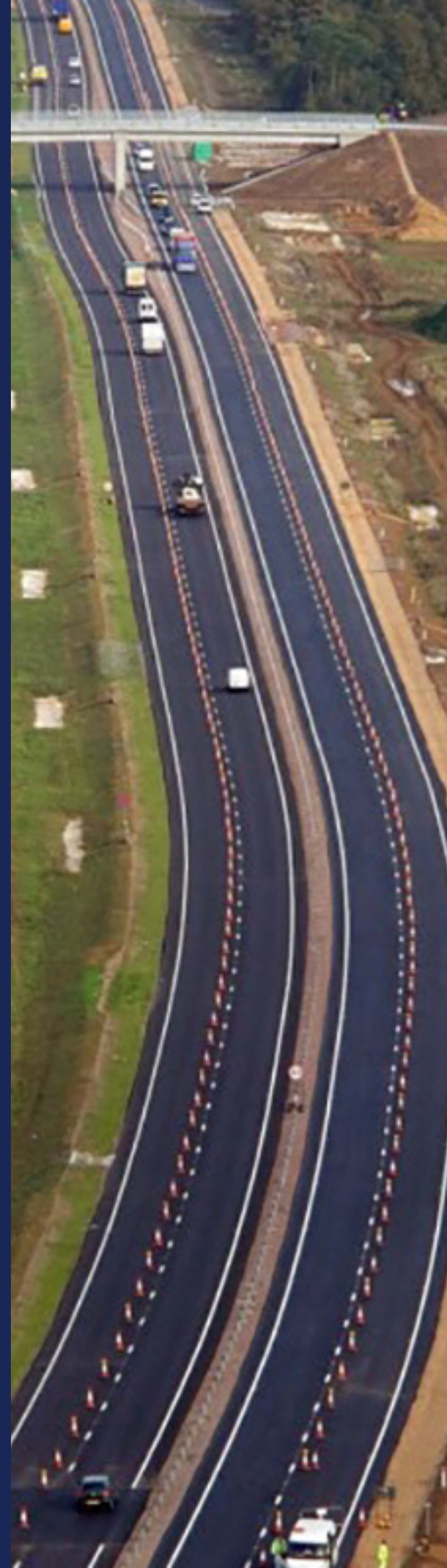
Offsite Construction – Where possible we aim to prefab any of our works offsite. This reduces the site programme. Secondary materials and labour are reduced, improving site logistics. It reduces costs. It eliminates health and safety risks. Improves quality. Reduces environmental waste on site. Reduces nuisance such as noise and dust on site. Deliveries to site can be timed effectively, and combined deliveries can reduce carbon emissions. It enables us to use mains power instead of fuels. This way of working increases productivity and improves efficiency.

Battery Operated Tools and Electric Scissor Lifts– Sword Contracts Limited uses where possible battery-operated tools or electric machinery. Such as tying wire guns and electric MEWPs. Lowering our carbon footprint.

Electronic Scaff Tag System – We use the award winning Inspect7® scaffold tag system. Inspect7® is a digital solution that is revolutionising scaffolding inspections in the construction industry. This digital device makes sure the weekly scaffolding inspections are carried out efficiently, competently and on time, it lets you see how long a given inspection has left, alerts you when the scaffold has failed or expired, and can be shared to multiple users including the Principal Contractor.

System Scaffold – We use the Plettac System which is a durable facade scaffolding system licensed for all 6 scaffolding classes and suitable for universal purposes of use. The advantages are quick assembly without tools, automatic vertical alignment of following lifts, self-levelling, integral deck retainers, decks fixed by means of star, profile bolts and an enlarged working area width. Reducing cost, time and effort and improving safety.

Formwork Systems – Where possible, we use forming and shoring systems rather than traditional timber shutters. The formwork systems are designed for easy assembly and progression throughout the project. It improves the safety and productivity of our team, and the products are reusable.

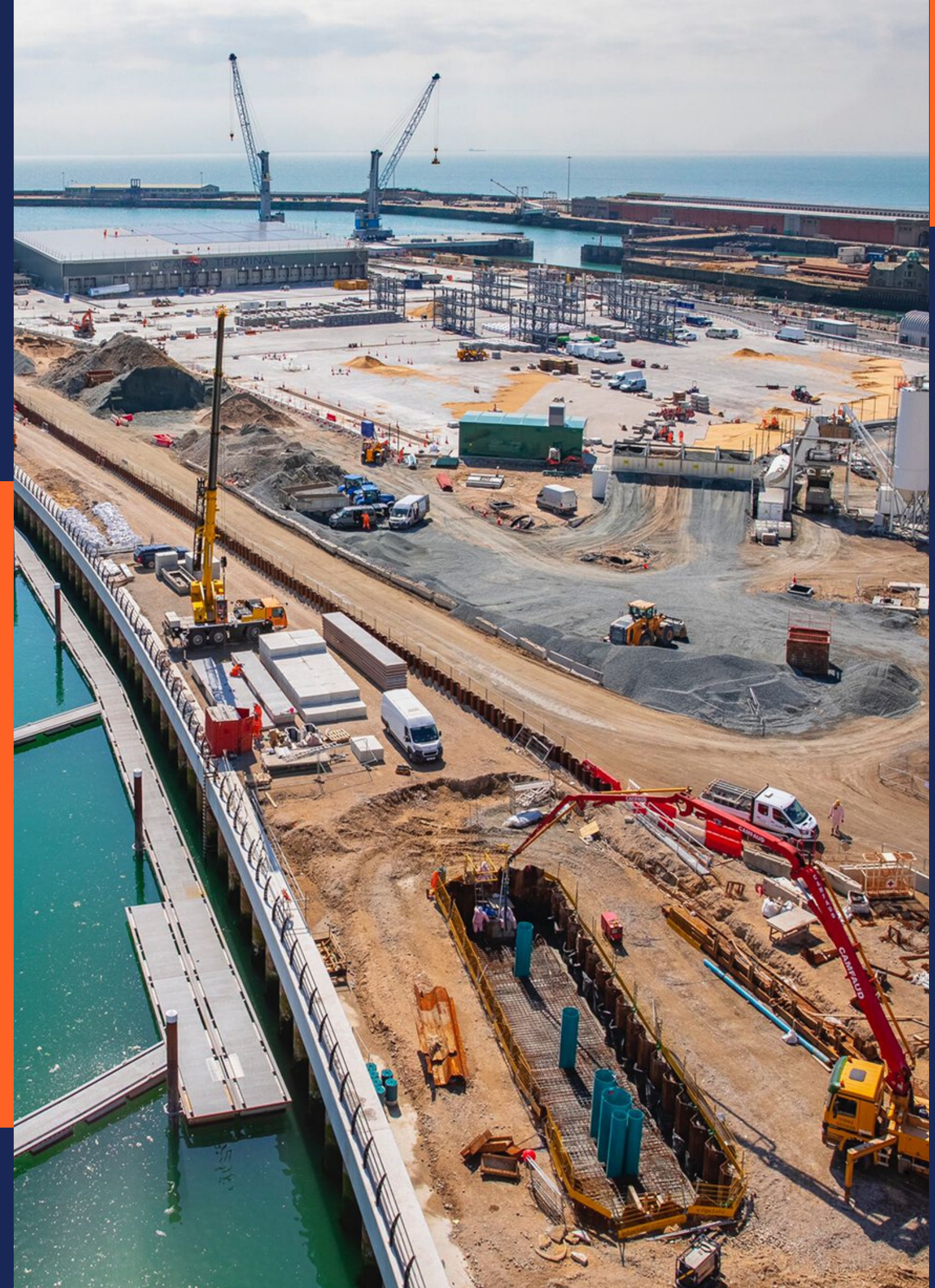


Our Approach

When the contract is underway, we aim to work collaboratively through the project. Liaising with the Principal Contractors and other subcontractors is vital for effective communication and is important to the success of any project

Our emphasis is on consistent quality, whether the contract is large or small.

We are adaptable to change and using our experience and knowledge we can overcome any hurdle.



Our Projects

We're proud to have played a significant role in shaping Britain's highways, infrastructure and housing for over 30 years, including the following projects:

M4 J3-12 Motorway Project (Balfour Beatty Vinci)

M1 16-19 Smart Motorway (Costain GalifordTry)

London Power Tunnels (Costain Skanska)

Reading Viaduct (Balfour Beatty)

M25 J16-27 Smart Motorway (DBFO) (Balfour Beatty Skanska JV)

Olympic Park - Roads & Bridges (Balfour Beatty)

M25 Holmesdale Tunnel Upgrade (Costain)

M25 Bell Common Tunnel Upgrade (Costain)

A2-A282-M25 Widening (Costain)

M25 J1b-3 Rapid Widening (Costain)

Dover Western Docks Revival (Volkerstevin)



Our Projects

M5 J4a-6 Smart Motorway (Balfour Beatty Vinci)
St Peters Village Bridge (BAM)
M20 Bridge Widening J4 (SISK)
Portsmouth Havant Bridge (Volkerfitzpatrick)
Liverpool Street Station Advance Works (Crossrail BAM)
A11 Widening (Birse Balfour Beatty)
M25 J30/A13 Corridor Relieving Congestion Scheme (Skanska Balfour Beatty JV)
M25 J8-10 (Balfour Beatty)
M25 J12-15 Bridges (Balfour Beatty)
City Airport Station (DLR AMEC)
Cheyne Wind Farm Turbine Bases (BAM)
Hoddesdon Rail Crossing (McAlpines)
WTW – Dartford Lane End (Costain)
Dover Eastern Docks (Phase 1 & 2) (Nuttall)
A23 widening (Carillion)
Blackwall Tunnel Improvements (BAM)
Fores Street tunnel improvements (BAM)
Abbey Mills Pumping Station (Costain)
BritNed Isle of Grain (BAM)
Swiss Cottage UCL Ampitheatre (BAM)
MAFA Package 3 (Volkerfitzpatrick)
Acton Diveunder (BAM)
Stratford International Ramp Extension (Fitzpatrick)

and many more...





Our Accreditations and Memberships

ISO 45001

ISO 9001:2015

ISO 14001:2015

RISQS (Rail industry Supplier Qualification Scheme)

Achilles Building Confidence

CHAS (Contractor Health and Safety Assessment)

Considerate Constructors Scheme

ConstructionLine (Gold)

SSIP

Builders Profile

Supply Chain Sustainability (SCS) Silver

FORS – Bronze

Construction Community and Logistics Safety (CLOCS)

IEMA

IOSH



OUR PARTNERS

Sword Training Centre

Sword Contracts Ltd is proud to announce that in 2017 it developed a new division of the company, focusing on education and training.

Sword Training Centre provides Health and Safety training courses to all industries, but predominately the construction industry, utilities and manufacturing.

We are proud to be an approved CITB training centre and offer Site Safety Plus courses including Health and Safety Awareness, SSSTS and SMSTS. As well as First Aid at Work, Emergency First Aid, AED Training, Manual Handling and Mental Health Awareness in the Workplace. All our courses are accredited, regulated and certified.

Our mission is to provide delegates with a greater knowledge, develop their skills and aspirations. We believe training should be engaging, affordable and flexible.



OUR PARTNERS

Forestrall Timber Merchants



We are an independent timber merchants with extensive knowledge and experience within the industry. Our customers can count on us as a reliable supplier of quality timber solutions for every job.

Operating from two branches, located in Kent (Medway and Dartford), we offer a variety of delivery options, including same day, next day delivery and timed deliveries. All aspects of the timber trade are covered at these branches including sawmilling and specialist machining.

At Forestrall, we are passionate about the use of wood in the construction and building industry and we set the standard with ethical, sustainable, and environmental values that run through the core of our company.

Our compliance includes Freight Operator Recognition Scheme (FORS) Bronze, Forest Stewardship Council (FSC) Programme for the Endorsement of Forest Certification (PEFC) and Chain of Custody we are also active members of the Timber Trade Federation (TTF).





National
Company
Award
Winner



£250k to <£3.5m

Presented to

Sword Contracts Limited

Sword Contracts Limited has won a Considerate Constructors Scheme Silver National Company Award.

This company has shown the highest levels of consideration towards the public, its workforce and the environment through adhering to the Scheme's Code of Considerate Practice:

Care about **Appearance** | Respect the **Community**
Protect the **Environment** | Care about **Safety**
Value their **Workforce**

2020 National Company Award winners are selected from the top performing registered companies monitored between 1 August 2019 and 31 July 2020.

Sword Contracts Limited has played a fundamental role in raising standards and is a credit to the industry.

Company Registration number: C0394. Awarded by the Considerate Constructors Scheme.

2022 FINALIST
BEST WOMAN IN HEALTH & SAFETY

WICEAWARDS
The European Women in Construction & Engineering Awards
BRACING SOME OBSTACLES AND BUILDING NEW HEIGHTS

Chantelle Goodwin-Sword

HSEQ MANAGER AND TRAINER | SWORD CONTRACTS LIMITED AND SWORD TRAINING CENTRE

FIND OUT MORE at WWW.WICEAWARDS.COM

[@WICEAWARDS](https://twitter.com/WICEAWARDS) [#WICEAWARDS](https://twitter.com/WICEAWARDS) [#WOMENINCONSTRUCTION](https://twitter.com/WICEAWARDS) [#WOMENINENGINEERING](https://twitter.com/WICEAWARDS)

Our Awards

Best Woman in Health and Safety Finalist - The European Women in Construction and Engineering Awards (WICE Awards) 2022

Considerate Constructors Silver Award Winners 2020

Considerate Constructors Silver Award Winners 2018

Let's Work Together

Construction is our passion. Building your visions means everything to us and no matter whether a contract is large or small, we will ensure that each and every project is carried out to the same high standard. Choose Sword Contracts Ltd because:

- We have the experience and expertise to safely complete projects.
- Of our attention to detail.
- We provide an exceptional service.
- Our team excel in the construction field.
- We are problem solvers.
- Of our emphasis on striving for zero harm within health and safety and environmental aspects.
- We aim to reduce our carbon footprint.
- Our communication is an important foundation.
- We promise to deliver a successful project through to completion, on time and on budget.
- Of our superior quality of workmanship.

Let's work together.

Let US exceed your expectations.



Contact Us

Website

sword-contracts.co.uk

Email

info@sword-contracts.co.uk

Contact number

+44 (0) 1634 377 078

